

QSL Card Creator – Version 10.5  
 ©2024, Robert J. Simoneau  
 All rights reserved

QSO Card Creator v10.5.0.0 - ©2024, Robert Simoneau (N1ET)

PriKey	Callsign	ContactDate	ContactTime	Band	Mode	QSOFlags	RST_Sent	Frequency	Power
7395	VE3THR	2022/11/02	18:40:00	20	SSB	MBEQL	59	14.272	100
7396	KT3T	2022/11/02	19:25:45	10	FT8	MBEQL	+06	28.075296	100
7397	N1ET	2022/11/04	00:17:00	10	SSB	MBEQLC	59	28.075296	100
7398	AI4FR	2022/11/04	00:33:45	30	FT8	MBEQL	+08	10.136758	100

Send E-Mail Search for Callsign: Search Comment: Default Exclude sent already Select Card Sync DB

**N1ET**  
 Robert J. Simoneau  
 21 Alden St.  
 Johnston, RI 02919  
 United States

Autumn in New England  
 George Waterman Lake

ITU:8 CQ:5 Grid:FN41gt Providence County LICW #2580 SKCC #26064 FR #6100002467

Confirming QSO With	Year	Month	Day	UTC Time	Band	Report	Mode
N1ET	2022	11	04	00:17	10m	59	SSB

73, Thanks for the QSO. I hope to meet you further down the log.

Formerly KA3WLV

Record Count: 154

**N1ET**  
 Robert J Simoneau  
 21 Alden St.  
 Johnston, RI 02919  
 United States  
 E-mail Address: robertsimoneau1991@comcast.net

Aliases: KA3WLV  
 DXCC: 291  
 First Name: ROBERT J  
 Last Name: SIMONEAU  
 Addr1: 21 ALDEN ST  
 Addr2: JOHNSTON  
 State: RI  
 Zip: 02919  
 Country: United States  
 Ccode: 271  
 Lat: 41.815515  
 Lon: -71.473065  
 Grid: FN41gt  
 County: Providence  
 Fips: 44007  
 Land: United States

This program was created to assist me with confirmation of my QSO contacts on Amateur radio. It can interface with either the N3FJP Amateur Contact Log (ACL), Ham Radio Deluxe (HRD), or Log for Old Men (Log4OM) and automatically keep track of QSO confirmation emails. The application can also import standard ADIF files from other loggers, it will annotate in its database which contacts have been sent QSL card by this program. Each ADIF import is appended to the applications database. When the ADIF - Amateur Data Interchange Format Use ADI logging system is selected on the setup screen, two additional menu items are added to the file menu. One for import and one to delete all records in the application database. If you delete all records from the ADIF database, you should have another means to determine which contacts had emails sent already. The application utilizes QRZ membership features to get the e-mail address of your contact for the purpose of sending an electronic copy of your QSL card.

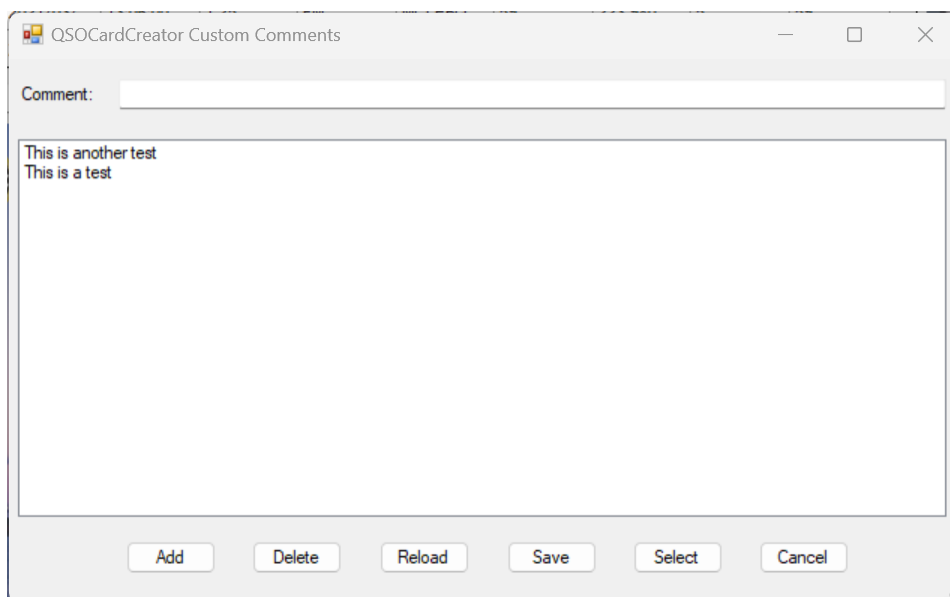
The program **requires a QRZ account with XML capabilities** to look up e-mail addresses, and works best with either N3FJP (ACL), Ham Radio Deluxe (HRD) or Log4OM logging to keep track of sent e-mails. ADIF files can also be used. It only runs on Windows 64 bit. If you meet the requirements, you can purchase the application using the button labeled "Purchase QSOCardCreator Now" on my web page. More info can be found on my web site linked below. I create the background image with a template I created in Photoshop.

You can design your own card for use with this application. A JPG file with a resolution of 1650 x 1050 produces the best results. Each graphic QSO file must have an accompanying configuration file with a .icf file extension. You can see the file format listed later in this documentation. The file contains the font, font size, styling, and the x, y point location of the contact data (4). The program has the ability to position the contact data around the image, but the image must exist. The .icf file allows for three (3) free style text (FST) entries, as well as settings for the font, font size, font color, and X,Y coordinates for the text on the image. **If the FST, or any other field is not to be printed on your image, set the X coordinates to zero (0). For instance, if you card uses frequency but not band, then send BAND\_X:0 in the image configuration file, and the band will not be printed.** I have a template for Photoshop that I use to make the images. If you need help making an image, seek out a High-Resolution Public Domain image and send it to me. I will create the image for you. It can be somewhat difficult to setup the program, but once running it is easy. Once you have it on your machine, I can also give you a summary on its operation.

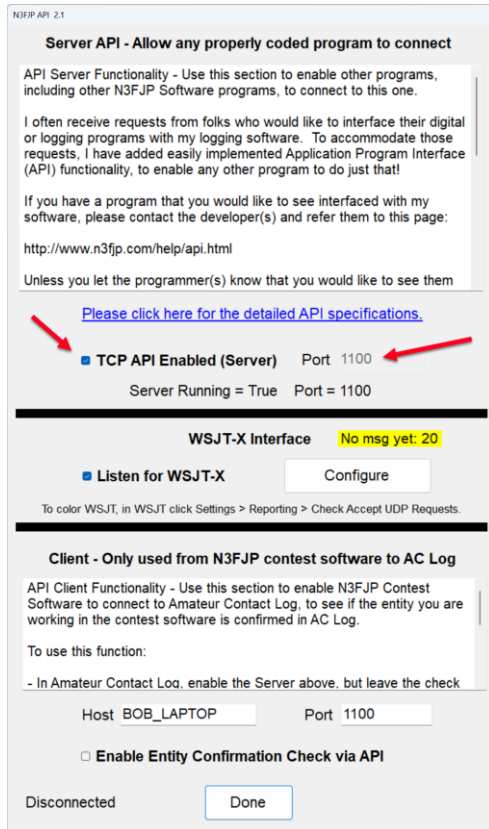
The program marks the sending of the QSO card by placing an "M" in the field called fldQSLConfByS in the ACL database (N3FJP). For HRD it sets the QSL Sent field to "Y", QSL Sent Date to today's date, sets the QSL Sent Via field to "E" for electronic, and sets the QSL\_VIA field to e-mail for users with a QRZ e-mail or NO e-mail for those with no e-mail at QRZ. For Log4OMusers, a field called QSOFlags is added to their database which is used to track sending of e-mails by the application. When using ADIF imports, a SQLite database will be created, an A backup of the database is moved into a directory under this applications directory. Within the program, you have a check box to exclude all records of previously sent QSO cards (6). This Checkbox is saved in the setup file, and when checked will show only the contacts not yet sent a card. When unchecked, all contacts are shown in the grid.

There is a function on the card menu to flag a record as unsent (F2 Key). You must be on that record to mark it, therefore, the exclude checkbox must be unchecked for you to see it (5). There is also an option to set the sent flag of a record without sending email (F3 Key). The send email option on the card menu performs the same function as the send button on the form. The save option on the card menu will create, but not send, a card by email. The One Time Test Email option will intercept outgoing mail and send it instead to the e-mail address listed in the E-Mail for test mode field under settings. Unlike the Test Mode checkbox, no log entries are made, and it is only for that single e-mail. You can blacklist or un-blacklist a callsign on the Cards menu. If some contact does not want your cards, you can search for their callsign and then hit F8 and they will be added to your blacklist. You will not be able to send to that callsign, unless you remove them from the blacklist, by searching for them and using F9 to remove that callsign from the blacklist. You can view who is on the Blacklist by using F12-Blacklist or clicking on that menu item on the log menu. The column headers of the grid allow for sorting of the contacts. Click on a header once to select and again to sort. Each click will change between ascending and descending order. This sort order is saved to the settings file.

The comment pulldown (5) allows you to override the default comment set in the setup screen for one e-mail or until default is reselected. The override comment for the cards should not exceed 100 characters, in fact depending on the card font, the comment may break the bonds of the comment area. Please check this before sending the card. There is also a custom choice in this pull down which will show the below form. You can type up to 100 characters in the comment textbox and hit the Add button to put the text in the list. Selecting a line in the list and pressing the delete button will remove that line. Double clicking on an item in the list box will populate the Comment input field, and allow for editing. You can then press add and then delete the old item. You can reload the file and cancel the changes with the Reload button. The Save button makes your changes permanent. The Select button will change the card comment to the selected item and close the form. The cancel button is in case you picked Custom unintentionally. If you scroll to the right of the grid, you can see the loggers comment field. Double clicking on the cell will copy it to the Windows clipboard.

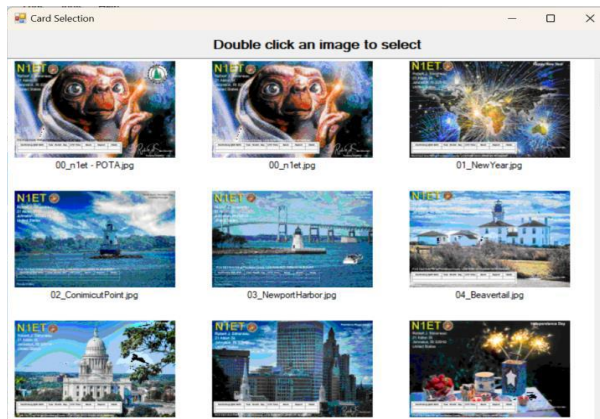


Many logger programs use block level locking vice record level locking. This means that several records may be locked during their updates. This can be a problem when the loggers are open at the same as this program, which is why this application warns you to close your logger if it is open. **PLEASE CLOSE YOUR LOGGER WHILE USING THIS PROGRAM. This restriction does not apply to N3FJP, as it provides an API SQL function.** When Amateur Contact Log (N3FJP ACL) is open, calls are made to it, and that program performs the record update, thereby avoiding any locking. When not open, ACL is updated just like the other loggers. For this function to work, N3FJP must have TCP API Enabled and use Port 1100.



The data button (9) will toggle and populate the information listing (11) with the data downloaded from QRZ xml service.

The Select Card Image button (7) will show a list view of all the cards you have in the application folder, which is normally C:\Program Files\QCOCardCreator. Double clicking on an image will load the card



Selecting multiple rows in the grid and hitting the Send E-mail (F1) will batch process the records. This is memory intensive, so I suggest only 50 records at a time.

Selecting multiple rows in the grid and hitting the Clear sent flag on the Tools menu will batch process the records. Be careful with this option.

Selecting multiple rows in the grid and hitting the Set sent flag on the Tools menu will batch process the records. Be careful with this option also.

On the tools menu, there is an option to Save System Files. This option will copy the setup configuration file, blacklist, Log, and internal db3 file used with ADI mode to a folder you select, with a subdirectory of QSOCardCreatorSysFileBackup.

The Sync DB button (8) will make a call to the logging database and repopulate the grid with data. This works with all loggers, but is best used with N3FJP as both the logger and program can be run at the same time.

The setting screen is where you set the most important items in the program. This file can be edited with the settings menu, or an external editor.

The screenshot shows the 'Settings' window with the following fields and controls:

- 1: Callsign
- 2: Key
- 3: QRZ Username
- 4: QRZ Password
- 5: E-Mail Username
- 6: E-Mail Password
- 7: E-Mail SMTP Server
- 8: From E-Mail Address
- 9: Default Email Subject
- 10: Default Email Body Text
- 11: Default Card Comment
- 12: Default Card Comment
- 13: Logging System
- 14: Database file to Use
- 15: Database file to Use (clear button)
- 16: E-mail for test mode
- 17: Card Image Config File
- 18: Card Image Config File (clear button)
- 19: Default ADIF Import folder
- 20: Default ADIF Import folder (clear button)
- 21:  Include contact data
- 22:  Include Credits
- 23:  Keep Cards
- 24:  Auto Image D/L
- 25:  Test mode
- Buttons: Reload, Cancel, Save
- Version: label

- Notes:
1. Your callsign
  2. The key provided with the purchase e-mail.
  3. Your QRZ username, often your callsign.
  4. Your QRZ account password.
  5. The username for email account, often your e-mail address. Ex [robertsimoneau1955@gmail.com](mailto:robertsimoneau1955@gmail.com)
  6. Your password for your e-mail. Many smtp servers require you to get a special app password. Ex. Gmail and Verizon

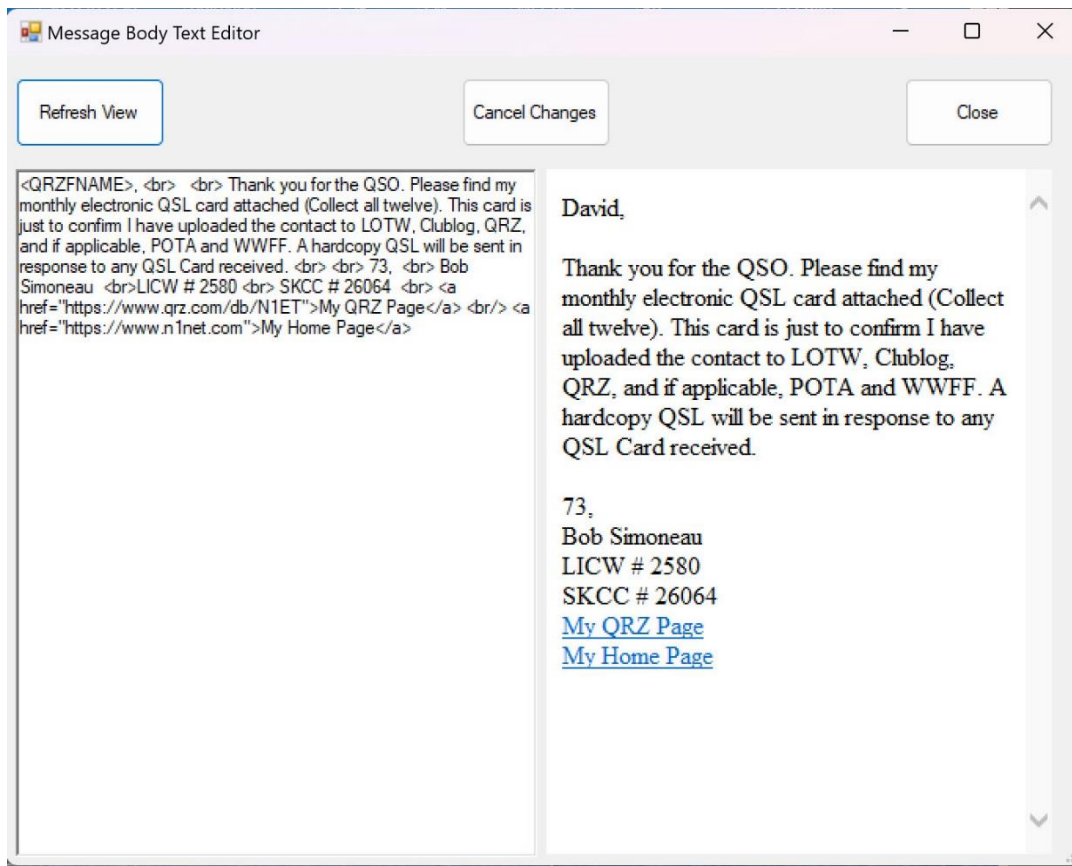
7. The smtp server for your e-mail account. Ex. smtp.gmail.com
8. Your email address for use in the from field of the e-mail.
9. The default subject for the e-mail. The text may include application variables (See below).
10. The default body text for the e-mail. The text may include application variables (See below) and html tags such as <br /> for linefeeds.
11. Simple HTML viewer/editor. Do Tools/Save system files recommended first.
12. The default comment for use on the card, and may include application variables (See below).
13. This is a dropdown list of the logging program you use
  - a. N3FJP - Amateur Contract Log
  - b. HRD - Ham Radio Deluxe
  - c. Log4OM - Log for Old Men
  - d. ADIF - Amateur Data Interchange Format
14. Database file to use for the application.
15. Button to open file dialog to locate the database file.
16. This is the e-mail address to sent mail when in test mode (See below).
17. Image configuration file.
18. Button to open file dialog to locate the image configuration file.
19. Default ADIF import folder.
20. Button to open file dialog to select default ADIF folder..
21. Check box to include contact information into the body of the e-mail sent.
22. Check box to include credit link to my website into the body of the e-mail sent.
23. Check box to keep sent cards. Unchecked the QSOCards directory is cleared on startup. Files saved in a QSOCardCreator/QSOCards directory in your document folder.
24. Check box to automatically save the QRZ image as you move thought-out the contact grid. Files saved in a QSOCardCreator/QRZ\_Images directory in your document folder.
25. Check box for enabling test mode, which will cause the following results
  - a. All actions within the program are logged into a file called LOG.TXT which is located in the application folder.
  - b. The e-mails are intercepted just prior to sending and the to address is changed to the address found in item 14 above.

Note: There are four (5) variables that can be used in The Default Email Body Text, Default comment field, Free Style Text fields and default subject that will be replaced during the sending of the e-Mail. They are as follows:  
(Note: All capitals within <>)

1. <QRZCALL> - Replaced with contact's callsign
2. <QRZLNNAME> - Replaced with contact's Lastname
3. <QRZFNNAME> - Replaced with contact's Firstname
4. <QRZSTATE> - Replaced with contact's State
5. <MYCALL> - Replaced with your call
6. <THEIRPARK> - Replaced with their POTA Park (SIG\_INFO)
7. <YOURPARK> - Replaced with your POTA Park (MY\_SIG\_INFO)

Note: Items can be combined. For Example: <QRZFNNAME>, <br /> <br /> <QRZFNNAME> thank you for the QSO. Can be used in the E-Mail Body as it is HTML format. In the Free Style Test fields, an example would be: Thank you <QRZFNNAME> for your QSO card.





## Menu Structure

### File

Import/Append ADI file	F10	Only available if logging program is set to ADIF -
Amateur Data Interchange Format.		
Clear all imported ADI records	F11	Only available if logging program is set to ADIF -
Amateur Data Interchange Format.		
Exit		Exit application

### Cards

Send E-Mail	F1	Send an e-mail based on the row selected in the grid
Clear sent Flag	F2	Removes the e-mail sent indicator
Set sent Flag	F3	Sets the e-mail sent indicator
Save...	F4	Saves the current QSO card for use elsewhere
One Time Test E-Mail	F5	Intercept this one e-mail and send to tester
Send W/O QRZ Address	F6	Allow input of e-mail address to set current card.
QRZ DATA	F7	Turn on showing of QRZ data.
Add current record to blacklist	F8	The highlighted record added to blacklist
Delete current record to blacklist	F9	The highlighted record removed from blacklist

### Setup

#### Logs

Clear	F10	Clears the debug log (LOG.TXT) created in Test Mode
View	F11	View the debug log (LOG.TXT) created in Test Mode
Blacklist	F12	Shows contents of blacklist file.

#### Enters setup form

## Tools

Save system files	Backup of Setup, Blacklist, Database, ICF, card and Comment files.
Black list maintenance	Manually add or delete from blacklist
Bulk set flag	Set the sent flag for multiple selected records
Bulk clear flag	Clear the sent flag for multiple selected records

## Help

### Help

Manual	Show this help file
Check for Update	Check the website for a newest version.
Website	Takes you to my website
About	Show version you are running.

## Card image configuration file Layout

```
IMAGEFILE:default.jpg
CALLSIGN_PAD:12
MONTH_PAD:2
DAY_PAD:2
YEAR_PAD:4
TIME_PAD:4
BAND_PAD:5
MODE_PAD:12
RST_PAD:4
INFOFONT:Calibri
INFOFONTSIZE:18
INFOFONTSTYLE:BOLD
INFOFONTCOLOR:BLACK
CALLSIGN_X:40
CALLSIGN_Y:800
MONTH_X:255
MONTH_Y:800
DAY_X:340
DAY_Y:800
YEAR_X:415
YEAR_Y:800
TIME_X:540
TIME_Y:800
BAND_X:670
BAND_Y:800
MODE_X:790
MODE_Y:800
RST_X:1005
RST_Y:800
```



COMMENT\_X:220  
COMMENT\_Y:840  
FST1:  
FST1\_X:0  
FST1\_Y:0  
FST1FONT:Calibri  
FST1FONTSIZE:48  
FST1FONTSTYLE:BOLD  
FST1FONTCOLOR:YELLOW  
FST2:  
FST2\_X:0  
FST2\_Y:0  
FST2FONT:Calibri  
FST2FONTSIZE:18  
FST2FONTSTYLE:BOLD  
FST2FONTCOLOR:BLACK  
FST3:  
FST3\_X:0  
FST3\_Y:0  
FST3FONT:Calibri  
FST3FONTSIZE:18  
FST3FONTSTYLE:BOLD  
FST3FONTCOLOR:BLACK  
FREQ\_X:0  
FREQ\_Y:0  
PWR\_X:0  
PWR\_Y:0  
RSTR\_X:0  
RSTR\_Y:0  
THEIR\_PARK\_X:0  
THEIR\_PARK\_Y:0  
YOUR\_PARK\_X:0  
YOUR\_PARK\_Y:0

This is the actual image to use

Number to pad the callsigns to assist in centering within the box

Number to pad the month to assist in centering within the box

Number to pad the day to assist in centering within the box

Number to pad the year to assist in centering within the box

Number to pad the time to assist in centering within the box

Number to pad the band to assist in centering within the box

Number to pad the mode to assist in centering within the box

Number to pad the RST data to assist in centering within the box

Font name to use in the data section of the card

Font size to use in the data section of the card

Font style in the data section of the card (REGULAR, BOLD, ITALIC, or BOLD+ITALIC)

Font color (BLACK, YELLOW, WHITE, RED, BLUE, GREEN, OR Hex RGB Color code (Ex. #FFFFFF for white, #000000 for Black))

Horizontal point position for the callsign

Vertical point position for the callsign

Horizontal point position for the Month

Vertical point position for the Month

Horizontal point position for the Day

Vertical point position for the Day

Horizontal point position for the Year

Vertical point position for the Year

Horizontal point position for the Time

Vertical point position for the Time

Horizontal point position for the Band

Vertical point position for the Band

Horizontal point position for the Mode

Vertical point position for the Mode

Horizontal point position for the RST

Vertical point position for the RST

Horizontal point position for the Comment

Vertical point position for the Comment

Free style Text 1 – Ignored if blank

Horizontal point position for Free style Text 1

Vertical point position for Free style Text 1

Font name to use for Free style Text 1

Font size to for Free style Text 1

Font for Free style Text 1 (REGULAR, BOLD, ITALIC, or BOLD+ITALIC)

Font color for Free style Text 1 (BLACK, YELLOW, WHITE, RED, BLUE, GREEN, OR Hex RGB Color code (Ex. #FFFFFF for white, #000000 for Black))

Free style Text 2 – Ignored if blank

Horizontal point position for Free style Text 2

Vertical point position for Free style Text 2

Font name to use for Free style Text 2

Font size to for Free style Text 2

Font for Free style Text 2 (REGULAR, BOLD, ITALIC, or BOLD+ITALIC)

Font color for Free style Text 2 (BLACK, YELLOW, WHITE, RED, BLUE, GREEN, OR Hex RGB Color code (Ex. #FFFFFF for white, #000000 for Black))

Free style Text 3 – Ignored if blank

Horizontal point position for Free style Text 3

Vertical point position for Free style Text 3

Font name to use for Free style Text 3

Font size to for Free style Text 3

Font for Free style Text 3 (REGULAR, BOLD, ITALIC, or BOLD+ITALIC)

Font color for Free style Text 3 (BLACK, YELLOW, WHITE, RED, BLUE, GREEN, OR Hex RGB Color code (Ex. #FFFFFF for white, #000000 for Black))

Horizontal point position for Frequency (Set X value to 0 to ignore)

Vertical point position for Frequency

Horizontal point position for Power (Set X value to 0 to ignore)

Vertical point position for Power

Horizontal point position for RST Rec'd (Set X value to 0 to ignore)

Vertical point position for RST Rec'd

Horizontal point position for your POTA Park (Set X value to 0 to ignore)

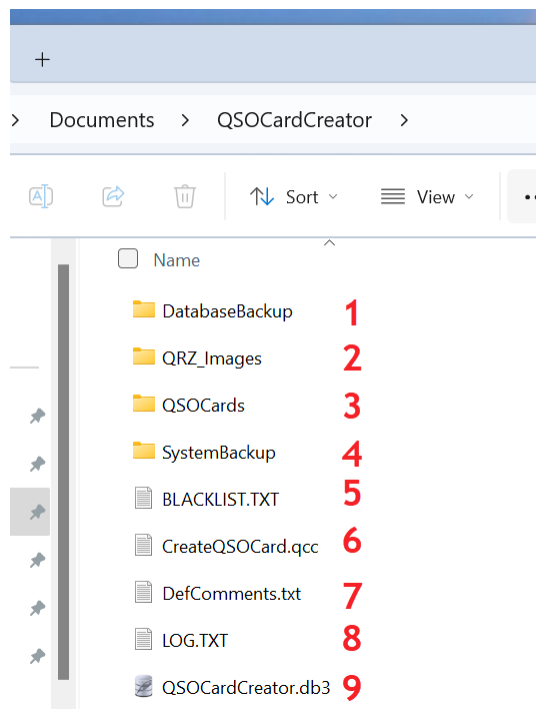
Vertical point position for your POTA Park

Horizontal point position for their POTA Park (Set X value to 0 to ignore)

Vertical point position for their POTA Park

## **File Structure for QSOCardCreator**

C:\Program Files\QSOCardCreator contains the application files and usually the image and icf files.



1. Each time the application is started, a copy of the database is moved into this folder for safety. **Note:** Overwritten each time.
2. QRZ images are saved to this folder while moving within the grid with Auto Image D/L checked or right clicking the image on the top right of screen.
3. Sent cards are kept here while the application is running. **Note:** Folder is emptied on application start unless Keep Cards is checked
4. When Save System Files is chosen on the Tools Menu, all important files are copied to this folder for safety. Overwritten each time.
5. Blacklist of contacts whom request not to get e-mails.
6. The configuration file for the application. **Note:** Extremely important file, backed up with System Files is chosen on the Tools Menu.
7. Where custom comments are stored.

8. When in test mode all actions are recorded to this file as well as any errors with or without test mode selected.
9. When running in ADIF database mode this file is created and you can import the ADIF file for use.

## **Troubleshooting**

The hardest part of setting up the application is the mail. You must find the correct SMTP client, username, and password. Several smtp servers require application passwords due to 2-step verification.

mail.twc.com - Time Warner – Use your web logon username and password

smtp.verizon.net – FIOS – Your email address and password.

smtp.aol.com - AOL - Your email address and app password - <https://help.aol.com/articles/Create-and-manage-app-password>

smtp.office365.com – Office 365 – Your email address and logon password

smtp.mail.yahoo.com - Yahoo - Your email address and app password

smtp.live.com – Hotmail – Logon Username and password

smtp.gmail.com – Google mail – Use your full email address and your web logon password – Must set google for Less secure apps under myaccount.google.com

smtp.gmail.com – Google mail – With two (2) step Verification - Your email address and app password (See below)

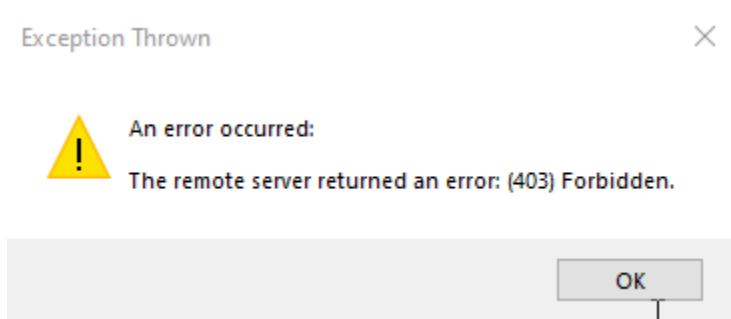
Example: Create & use App Passwords (Needed for Gmail)

If you use [2-Step-Verification](#) and get a "password incorrect" error when you sign in, you can try to use an App Password.

1. Go to your [Google Account](#).
2. Select Security.
3. Under "Signing in to Google," click to the right of 2 Step-Verification on the > symbol. Scroll down to App Passwords, and click the > symbol. You may need to sign in. If you don't have this option, it might be because:
  1. 2-Step Verification is not set up for your account.
  2. 2-Step Verification is only set up for security keys.
  3. Your account is through work, school, or other organization.
  4. You turned on Advanced Protection.
4. In the box that appears type QSOCardCreator and then press the Create button.
5. You will be given a 16 character password, select it and Ctrl-c to copy.
6. Tap Done.
7. Paste that password in the setup screen E-mail password field. (Remove the spaces between each four characters.

Tip: Most of the time, you'll only have to enter an App Password once per app or device, so don't worry about memorizing it.

## **Error 403 – Forbidden**



<https://www.howtogeek.com/357785/what-is-a-403-forbidden-error-and-how-can-i-fix-it/>

## Version History

- Version 1 - For Use with N3FJP - Amateur Contact Log
- Version 2 - Added use for HRD - Ham Radio Deluxe
- Version 3 - Added QRZ data display
- Version 4 - Misc. bug fixes
- Version 5 - Added ADIF file import and use for those without the supported loggers.
- Version 5.1 - Added user requested Free Style Text variables to image configuration file. (.icf)
- Version 5.2 - Added update check and notification
- Version 5.3 - Fixed missing band field on card when using ADIF
- Version 5.4 - Added use of QRZ variables in the default comment field as requested by user.
- Version 5.5 - Allows the photos and icf files to be located in any directory on the computer, not just in the application directory. This was a user request.
- Version 5.6 - Changed to new install/update system. Now one file for both tasks, with your settings-maintained safety.
- Version 5.7 - Changed the program method of updating the Ham Radio Deluxe database. Instead of a "M" being added to COL\_USER\_DEFINED\_8 field, which is also used for antenna under the system tab, now the "N" in the COL\_QSL\_SENT field is changed to "Y", a date is added to COL\_QSLSDATE, and a "E" for electronic is added to the COL\_QSL\_SENT\_VIA field. The grid column header sort settings are now maintained when setup is used, or the grid is refreshed.
- Version 5.8 - Added Power and frequency to the image control file, as well as making it so that any element in the icf with a X coordinate is not printed on your card. If you use frequency and don't want band to print set BAND\_X:0
- Version 5.9 - Fixed a problem with QSO Sent header for HRD during record search. Added a credits line to the message body, controlled by a check box under setup.
- Version 6.0 - Auto settings update. Now a change to the database choice or image configuration file is immediately enabled.
- Version 6.1 - User requested temporary card comment input.
- Version 6.2 - User requested RST Received data for cards. Frequency and Power entries were also added. You can open your .icf file with any text editor and add the following at the bottom of the file. Remember to leave the X values at zero (0) to avoid printing on the cards.

- Version 6.3 - User requested additional font color support. In addition to standard colors, RGB hex codes can be used for INFOFONTCOLOR, FST1FONTCOLOR, FST2FONTCOLOR and FST3FONTCOLOR in the Image Configuration File (ICF).
- Version 6.4 - Fixed problem with search function on ADI data sources.
- Version 6.5 - Speedup e-mail send process. QRZ Date List now allows you to click on one or more items and hit Ctrl key and “C” to copy to clipboard. The Temporary comment checkbox has been replaced with a dropdown containing: Default, One Time, and Temporary.
  1. Default, gets the comment from the setup file.
  2. One time, prompts for the input of a comment for use on just one mail, and returns to the default from the setup after sending the current e-mail.
  3. Temporary prompts from an input and uses that input in every e-mail until you choose default again, at which point it gets the comment from the setup file.
- Version 6.6 - Fixed problem with card save function caused by last update.
- Version 6.7 - F5-One time test send fixed. Added a user requested Blacklist function. (F8 & F9) on the Cards menu, and F12 on the Logs menu. This was requested by a user. If some contact does not want your cards, you can search for their callsign and then hit F8 and they will be added to your blacklist. You will not be able to send to that callsign, unless you remove them from the blacklist, by searching for them and using F9 to remove that callsign from the blacklist. You can view who is on the Blacklist by using F12-Blacklist or clicking on that menu item on the log menu.
- Version 6.8 - Moved setup files from the Program files directory into the users AppData directory. This will allow multiple user accounts on the same computer to keep their settings separate.
- Version 7.0 – Added support for Logbook For Old Man (Log4OM).
- Version 7.1 - User request for on-screen visual indication of your logger being open. Help file clarification of why you should shut down your logger while using QSOCARDCreator.
- Version 7.2 - Fixed a problem with the settings screen. Somehow a media control got placed on the form, blocked the top two input boxes.
- Version 7.3 - Grid column header sort now saved in settings file (Double click header of grid to sort ascending order, click again for descending, Exclude checkbox also saved to settings file).
- Version 7.4 - Fixed a problem with sorting on send.
- Version 7.5 - Fixed problem with initial sort order on sort.
- Version 7.6 - This version moves the log file and blacklist file to the user’s directory to avoid contamination when the application is used by multiple users on the same computer. This allows each user to maintain separate configuration, blacklist, and log files. Because the program key is connected to the callsign, and the callsign prints on each e-mail, a license is required for each user.
- Version 7.7 – Added a checkbox on the setup screen to allow for the keeping of cards in the QSL Cards directory. Unchecked and the cards are deleted on startup.
- Version 7.8 - Batch Mode
  - Program showing correct icon on taskbar with underline when open.
  - Prevent multiple instances of the app running
  - Tools menu to save system files. You select location.
- Version 7.9 - Main screen resized to fit better on small laptop displays.
- Include contact data was not being saved correctly



- Version 8.0 The email subject can now be set in the setup form.
- Ex. QSO Contact - <QRZCALL> DE N1ET
- The main form and settings form can now be maximized
- Version 8.1 Fixes error: Operation is not valid because it results in a reentrant call to the setcurrentcelladdresscore function.
- Version 8.2 Changes grid count display to count down from the number of records to batch during batch processing.
- Added version number to main form title bar.
- Added selected count along with grid recount count
- Added input counter for ADIF impor
- Bugs fixes
- Version 8.3 Fixed an issue with ADIF database not created correctly.
- Version 8.4 Worked on showing correct image sequence during batch process.
- Added user requested function to save QRZ image file by right clicking on image.
- Added user request for custom comments under the Comment pulldown on main screen.
- Version 8.5 Fixed error message when G-Mail max daily limit is reached (500).
- All error received during e-mail send are logged whether in test mode or not.
- Fixed a problem with ADIF Input with a mode of MFSK and sub mode of FT4.
- Version 8.6 When importing an ADIF File, Submode is used if not blank.
- User requested Tools/Blacklist maintenance added to allow direct input of call.
- Fixed bug where network loss could empty the setup file.
- Version 8.7 Fixed SSL/TLS error for Windows 7 Edge users.
- Lessen chance of Forbidden (403) error from QRZ
- Tools/Save System Files now backs up system files, database, icf, and card files to users Documents file in a directory called QSOCardCreatorSysFileBackup.
- Added Tools/Bulk set flag and Tools/Bulk clear flag to replace the separate utilities that were used to allow new users to mark old records as sent.
- Version 9.0 Speed increases in several areas
- Correct time on cards for Ham Radio Deluxe users
- Add Esc key terminate of Batch Processes
- Fixed DB sort order from setup file
- Fixed a problem with checking weather QRZ is online
- Increased Tools/Bulk set flag and Tools/Bulk clear flag speed 100 fold.
- Added <MYCALL> variable for use.
- Version 9.1 Blacklist now sorted.
- Reset no data panel after use
- Extracts Primary call from Secondary call. Example OH0/DL1FMK
- Would return data for DL1FMK
- Version 9.2 Log4OM – Contact data shown incorrectly in e-mail body.
- Version 9.3 The database record number is now appended to the card filename.
- (Ex: N1ET\_20221104\_00\_17\_10m\_SSB\_RecNum\_7397.jpg)
- Version 10.0 Added meters “m” or “cm” to band while in ADIF mode.
- Maintain grid positioning when losing and re-gaining focus on the grid.
- Added Auto Image download option.

- Maintain row positioning between functions
- Moved scattered applications all to the users document folder in a QCOCardCreator directory.
- Fixed problem with Blacklist Maintenance
- Version 10.1 Font style can now be REGULAR, BOLD, ITALIC, or BOLD+ITALIC in ICF files.
- Error trapping in Test mode has been strengthened.
- Fixed a problem with Google drive sync and your documents folder.
- Changed all internal references from robertsimoneau.com to n1et.com.
- Made speed updates to Log4OM database access.
- Version 10.2 If power is zero or blank, it will no longer be printed in the Data content section of the message body.
- Avoid import of dups from ADIF, based on call, date, time, band and mode.
- Added Select card image button to main form, the function reads your current setup to find where you store your image files and shows them on screen. Double clicking on an image will select it's ICF, display it and update your setup file to use that image. The only restriction is that both the JPG and ICF must have the same filename.
- Fixed sort error on ADIF time column.
- Outlook.com quota limit error trapped and displayed
- Added comment field to grid
- Locked Prikey and Callsign cells during grid scroll right
- If comment field is to large for grid cell, a tool tip is used to display comment. Double clicking the cell will copy it to the Windows Clipboard.
- Version 10.3 Save default ADIF import folder in setup file.
- Added THEIR\_PARK and YOUR\_PARK to dup check for allow for 2fer (ADIF).
- Added THEIR\_PARK and YOUR\_PARK to ICF file for use on the card  
See ICF line additions above for new entries for POTA data
- Added <THEIRPARK> and <YOURPARK> variables
- Added My POTA Park and Your POTA Park to the Contact data in the message body, if not blank.
- Added simple HTML editor for use with the default message body text, accessible from the setup screen with a button to the right of the default message body text line.
- Version 10.4 ADIF Log users were unable to mark sent or cleared unless toggling The Exclude checkbox.
- Log4OM users have an empty grid when first starting up and have to toggle the Exclude checkbox.
- When trying to send e-mails, if a mail has already been sent, it will not resend unless you clear the sent flag. You will be notified of the number skipped.
- Version 10.5 QSOCardCreator now uses Amateur Contact Log's (ACL by N3FJP) TCP Server with local address 127.0.0.1 and Port 1100 to direct ACL To update the records for send and unsend. This removes the record Locking problems and allows QSOCardCreator and N3FJP ACL to run at the same time. **Note:** The other loggers still require the Logger closed while using QSOCardCreator. I are seeking remedies.
- Made more OneDrive friendly
- Fix Freq display on card for Log4OM

